

K6GCU15TT

TOP GAS RANGE 6 BURNERS



PRODUCT DESCRIPTION

Stainless steel frame. Athermic thermoset plastic knobs.

Heating obtained through single-crown **stabilized flame burners** with different power ratings.

Each burner provided with a **safety gas cock**, which enables the output to be regulated from maximum to minimum.

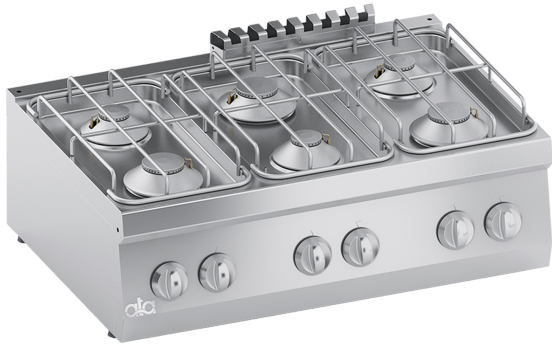
Safety ensured by a thermocouple kept active by the burner flame.

Surface grids made of steel covered by protective material and **burners characterized by stainless steel body** and burner caps made of nickel-brass.

Surface grids placed on moulded surfaces with rounded edges and water-tight burners for easy cleaning.

Tested with natural gas or LPG, according to the user's needs.

Accessories available on demand



TECHNICAL SPECIFICATIONS

Width: 900 mm
Depth: 600 mm
Height: 280 mm
Weight: 34 kg
Volume: 0.26 m³
Gas power: 30.00 kW

